

Technical sheet :

# **220 TJ**

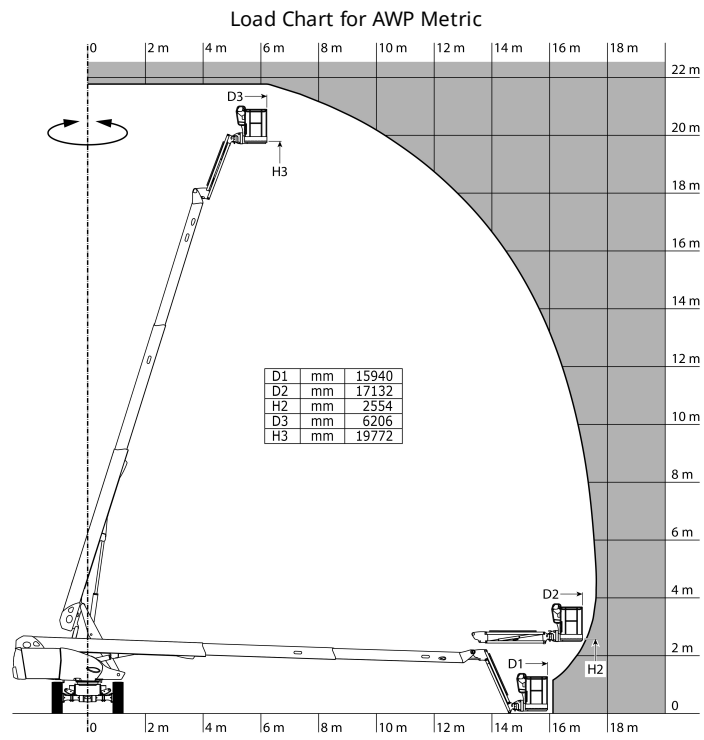
---



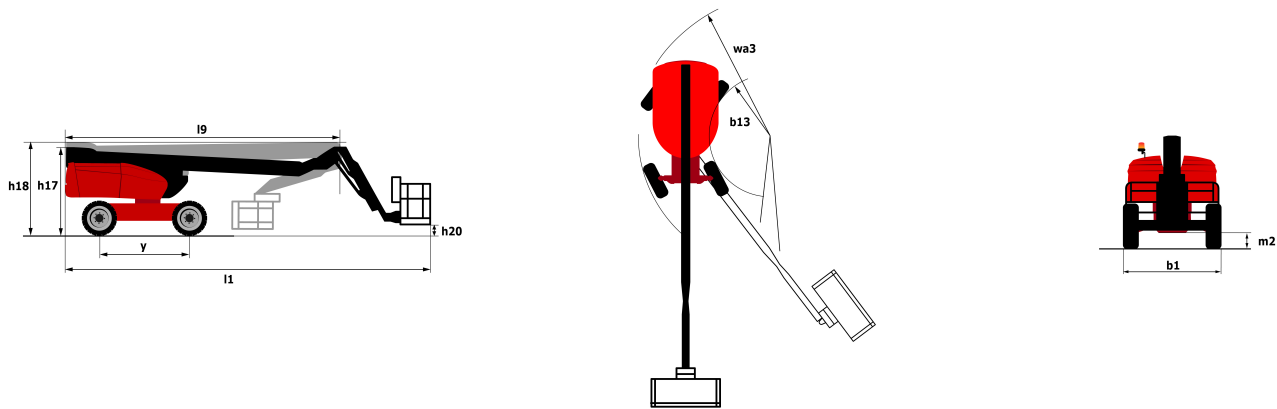
Capacities		Metric	Imperial
Working height	h21	21.77 m	71 ft 5 in
Platform height	h7	19.77 m	64 ft 10 in
Max. outreach	r1	17.63 m	57 ft 10 in
Pendular arm rotation (bottom)		+66 °	+66 °
Platform capacity	Q	230 kg	507 lbs
Turret rotation		360 °	360 °
Platform rotation (right / left)		90 ° / 90 °	90 ° / 90 °
Number of people (inside / outside)		2 / 2	2 / 2
Weight and dimensions			
Platform weight*		11850 kg	26125 lbs
Platform dimensions (length x width)	lp / ep	2.1 m x 0.8 m	6 ft 11 in x 2 ft 7 in
Overall width	b1	2.48 m	8 ft 2 in
Overall length	l1	9.8 m	32 ft 2 in
Overall height	h17	2.47 m	8 ft 1 in
Overall length (stowed)	l9	7.29 m	23 ft 11 in
Overall height (stowed)	h18	2.72 m	8 ft 11 in
Floor height (access)	h20	0.39 m	1 ft 3 in
Jib length	l13	2 m	6 ft 7 in
Counterweight offset (turret at 90°)	a7	1.34 m	4 ft 5 in
Internal turning radius (over tyres)	b13	2.96 m	9 ft 9 in
External turning radius	Wa3	6.19 m	20 ft 4 in
Ground clearance at centre of wheelbase	m2	0.44 m	1 ft 5 in
Wheelbase	y	2.8 m	9 ft 2 in
Performances			
Drive speed - stowed		4.8 km/h	3 mph
Drive speed - raised		1 km/h	0.6 mph
Gradeability		40 %	40 %
Permissible leveling		4 °	4 °
Wheels			
Tyres type		Solid Tyres Cured-On	Solid Tyres Cured-On
Drive wheels (front / rear)		2 / 2	2 / 2
Steering wheels (front / rear)		2 / 0	2 / 0
Braking wheels (front / rear)		0 / 2	0 / 2
Engine/Battery			
Engine brand / model / norm		Kubota - V1505.E3B / Stage III A	Kubota - V1505.E3B / Stage III A
I.C. Engine power rating / Power (kW)		35 Hp / 26.2 kW	35 Hp / 26.2 kW
Miscellaneous			
Ground Pressure		18.2 daN/cm <sup>2</sup>	263.97 PSI
Hydraulic Pressure		340 Bar	23 PSI
Hydraulic tank capacity		94 l	24.83 US gal
Fuel tank		72 l	19.02 US gal
Vibration on hands/arms		< 0.5 m/s	< 1.64 ft/s
Daily consumption **		7.72 l	2.04 US gal
Standards compliance			
This machine is in compliance with:		European directives: 2006/42/EC- Machinery (revised EN280:2013) - 2004/108/EC (EMC) - 2006/95/EC (Low voltage)	European directives: 2006/42/EC- Machinery (revised EN280:2013) - 2004/108/EC (EMC) - 2006/95/EC (Low voltage)

\*Varies according to options and standards of the country to which the machine is delivered

# Load chart



## Dimensional drawing



## Equipment

### Standard

- 230V Predisposition
- 4 simultaneous movements
- 4 wheel drive
- Audible alarm and illuminated indicator lamp (leveling, overload, lowering)
- Backup electrical pump
- Continuous turret rotation
- Crab mode
- Differential locking on rear axle
- Easy Manager
- Electronic platform compensation
- Emergency stop button in platform and on frame
- Engine mounted on sliding platform
- Front axle with limited slip
- Fuel gauge with low level indicator
- Fully galvanized basket with demountable floor
- Hour meter
- Integrated diagnostic assistance
- Leveling unlocking
- Management via engine speed bearing
- Oscillating front axle
- Proportional controls

### Optional

- 110 or 230V plug with differential circuit breaker
- Access control keypad for easy link
- Air predisposition
- Basket 1,800 mm
- Battery cut-off
- Beep upon travel
- Biodegradable oil
- Exhaust line protection, spark arrestor and fume reduction system
- Exhaust purifier
- Indicator light (when turret is over 90°)
- Key lock on fuel tank
- Onboard generator (3,5 or 5 kW)
- Personalized paintwork
- Remote control for transport

Optional

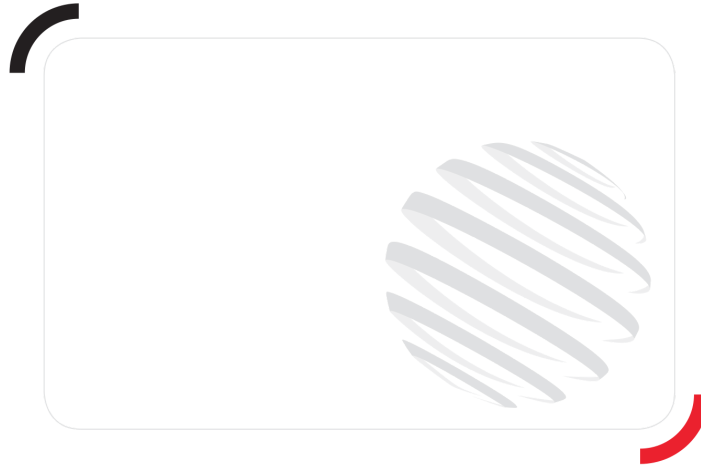
SMS : Safe Man System

Safety harness

Screen protection on the lower box control

Spark arrester

Working light



Siège Social  
430 rue de l'Aubinière - 44150 Ancenis Cedex - France  
Tel: +33(0)2 40 09 10 11 - Fax: +33 (0)2 40 09 10 97  
[www.manitou.com](http://www.manitou.com)



This brochure describes versions and configuration options for Manitou products which may be fitted with different equipment. The equipment described in this brochure may be standard, optional or not available depending on version. Manitou reserves the right to change the specifications shown and described at any time and without prior warning. The manufacturer is not liable for the specifications given. For more information, contact your Manitou dealer. Non-contractual document. Product descriptions may differ from actual products. List of specifications is not comprehensive. The logos and visual identity of the company are the property of Manitou and may not be used without authorisation. All rights reserved. The photos and diagrams contained in this brochure are provided for information only.

MANITOU BF SA - Limited company with board of directors - Share capital: 39,668,399 euros - 857 802 508  
RCS Nantes